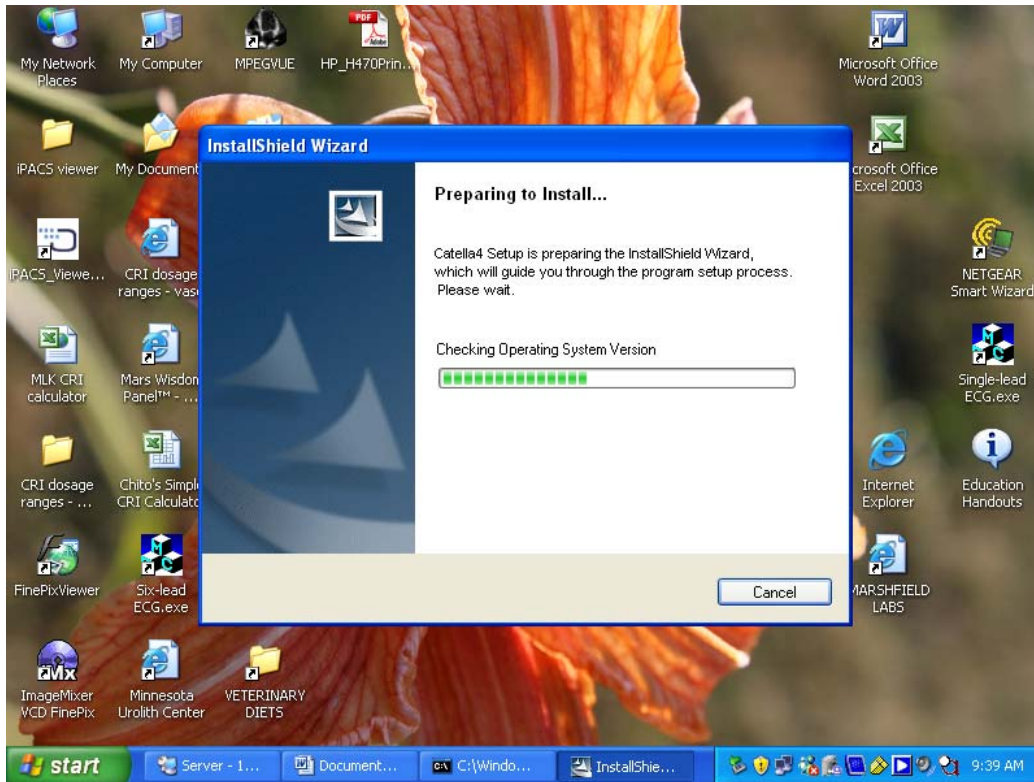
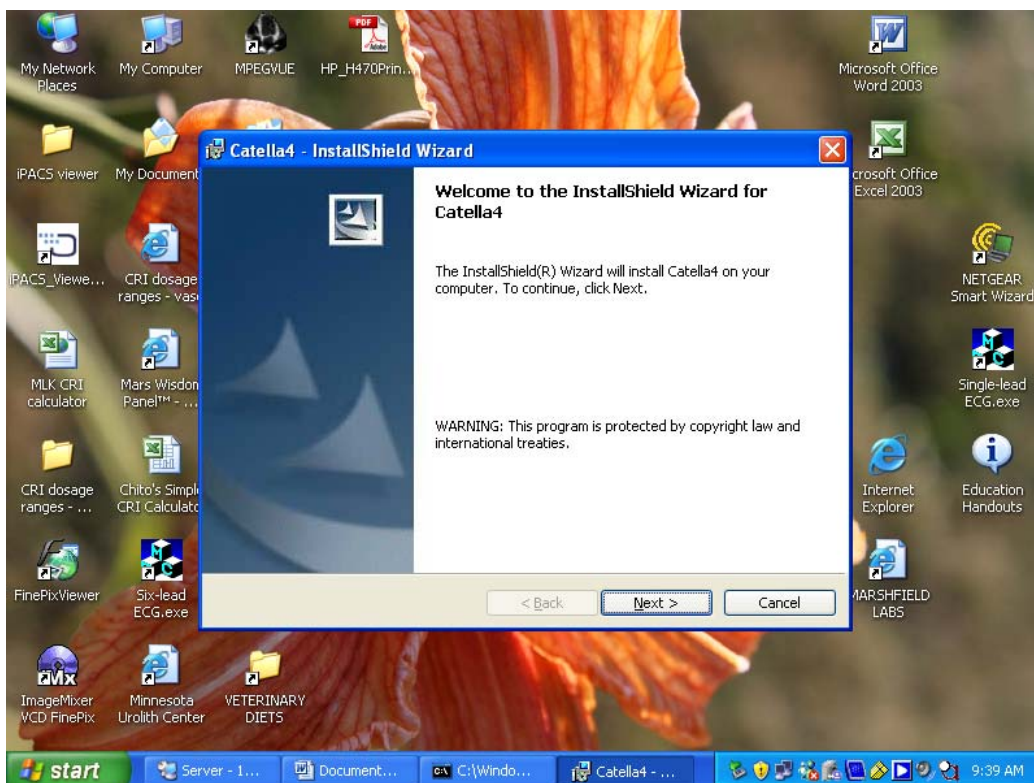


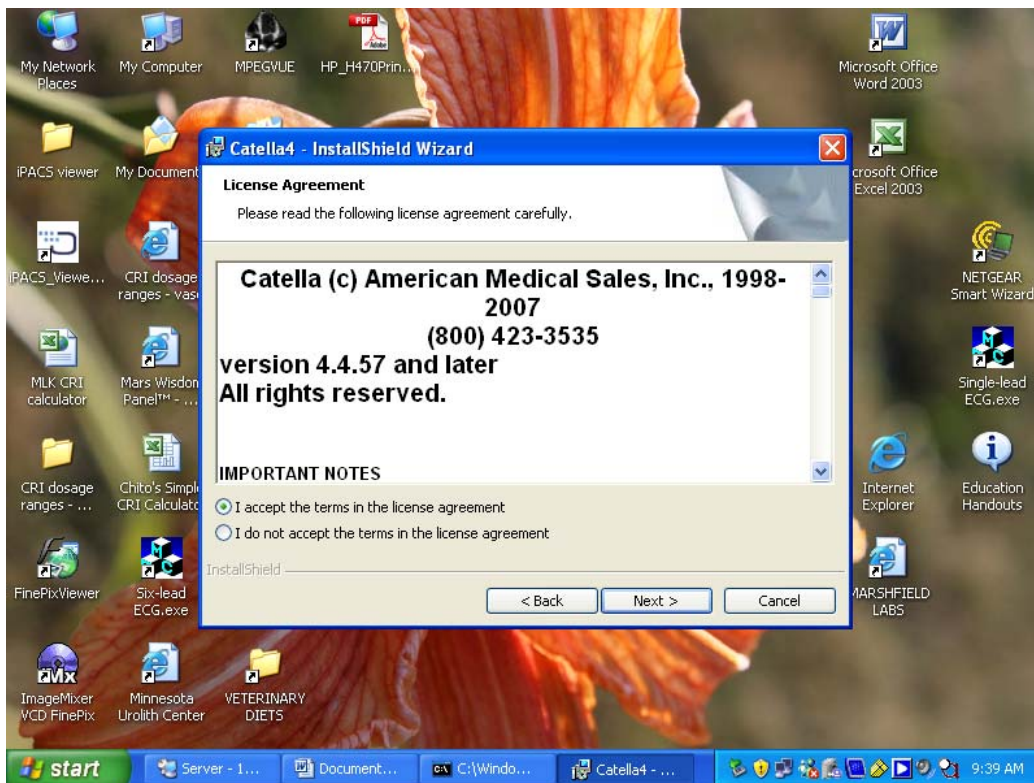
Instructions on loading and installing the Catella4 x-ray cd



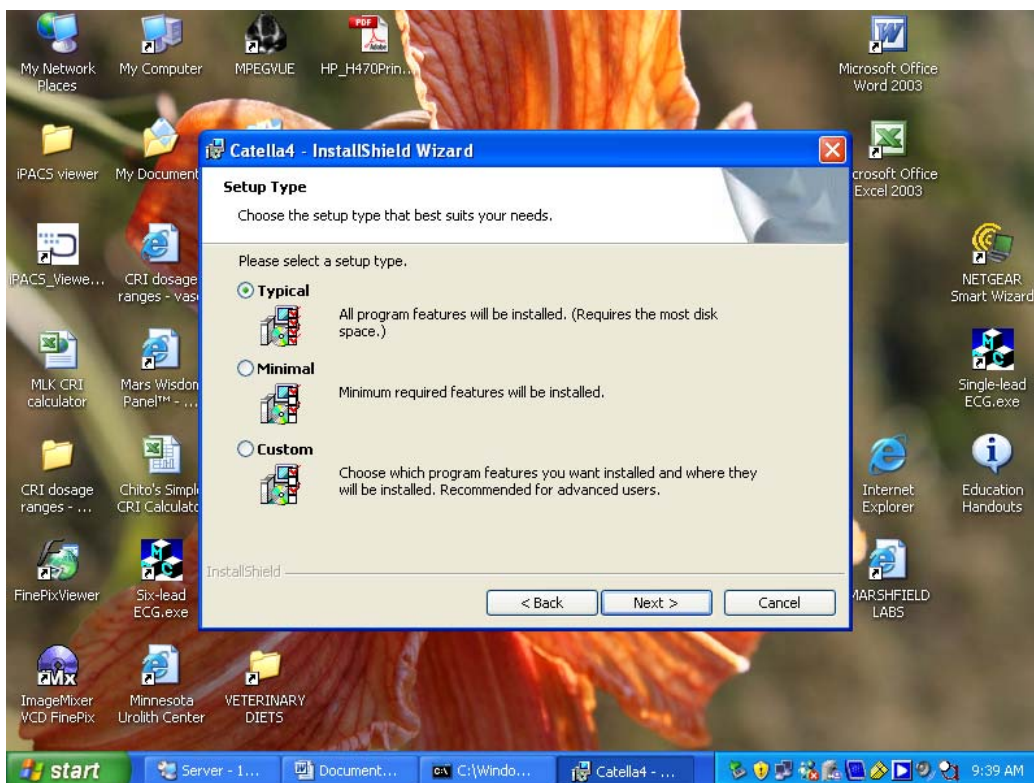
Open your cd drive, place the cd in and close the drive. The cd and installation process should automatically begin as seen above. If not, go to My Computer and double click the cd drive to start it. **NOTE:** This is a safe program to install to your computer but if you prefer not to install, scroll down to the Troubleshooting/Problems section and follow instructions starting with item 2.



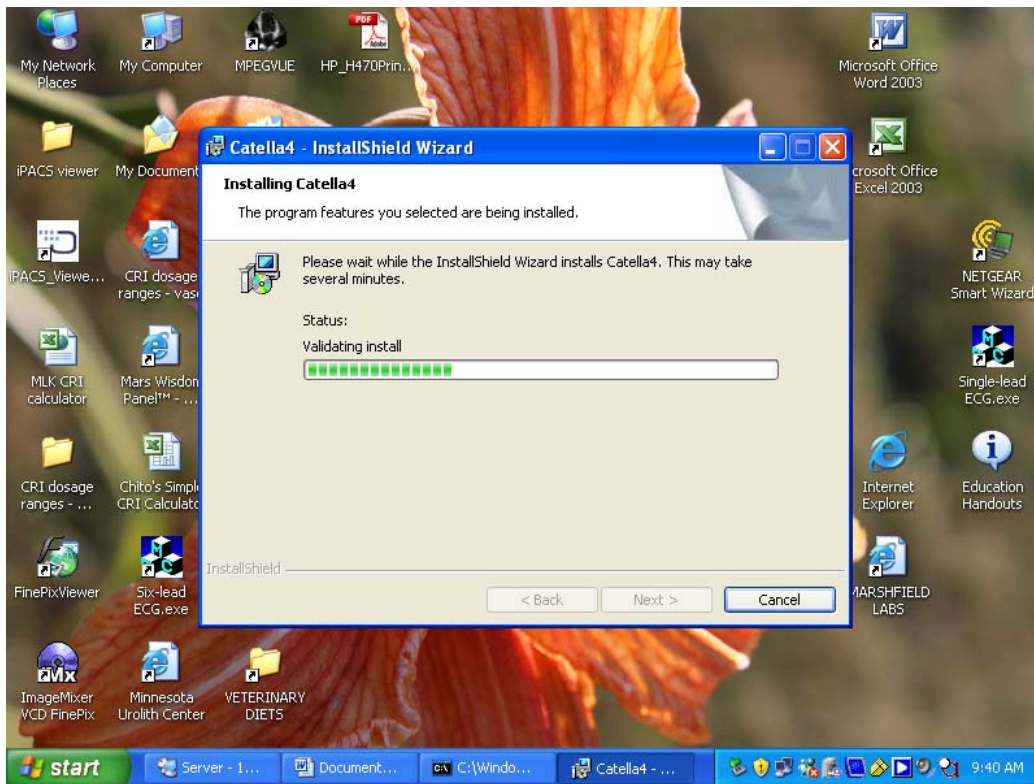
Click next...



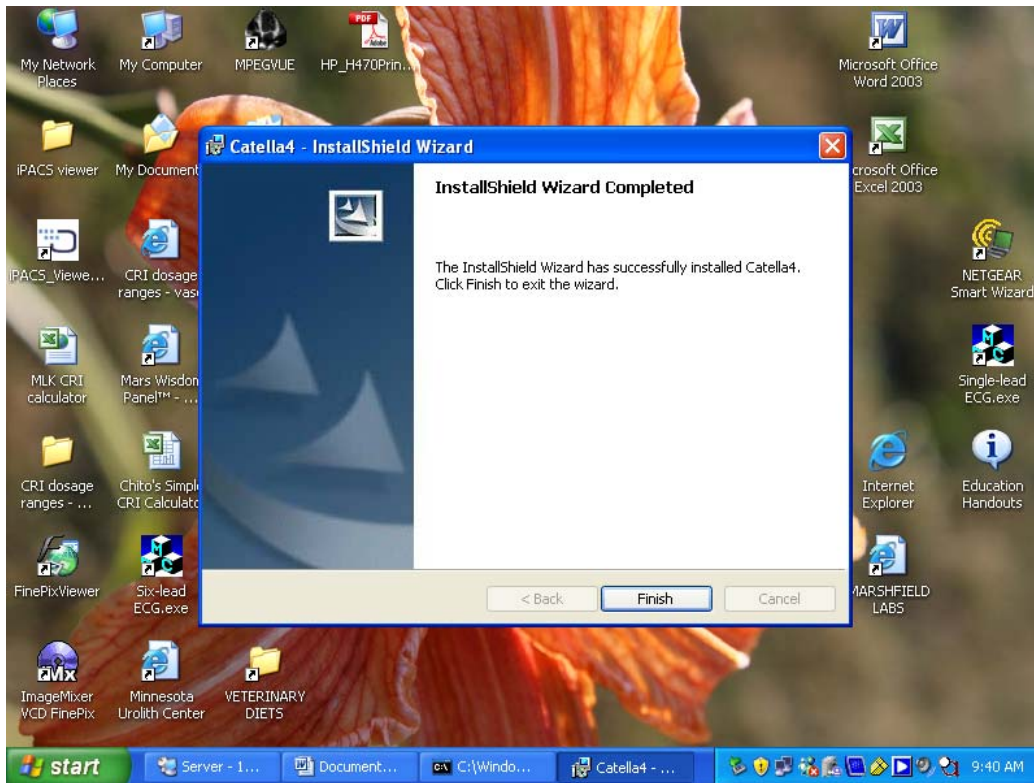
Accept terms and click next...



Choose "Typical" and click next...



Viewer takes a few minutes to install...



Once you click "Finish" the program should open automatically and bring up your pet's x-rays (see below for tips on using the viewer).

If viewer does not start, go to My Computer and double click the cd drive to launch the program.

Tips on using the Catella4 Viewer:

- The viewer may cut off some information/images on your home computer. The equipment we use includes a very large resolution monitor which allows us to visualize all the details in the x-rays, but does not transfer well to an average home computer monitor. See below for more info on this.
- Choose the x-ray you wish to view by choosing a thumbnail from the left hand side.
- If you right click while the pointer is within the red box containing the main x-ray image, the pointer will toggle from a **hand** to a **cross bar** to a **magnifying glass**. Left click and hold, then drag up and down to apply the following:

Hand: moves x-ray around on screen

Cross bar: adjusts the lightness, darkness and contrast of the x-ray

Magnifying glass: adjusts the size of the x-ray

- To close the viewer, click the red “Logout” button

NOTE: The green “OK – Next” button does nothing useful in the viewer. If you click it by mistake, no big deal, just click the close button in the upper right corner and then “Logout” and re-open the viewer.

- To re-open the viewer again, go to My Computer, then double click on the cd drive (usually D drive)

Troubleshooting/Problems:

If there are several x-rays and they won't all fit on your monitor with the Catella4 Viewer, you can also open and view the jpeg versions of the x-rays. To do this, follow the instructions below:

1. Close the Catella4 viewer
2. Go to My Computer, single click the cd drive (to select it but *not* launch the viewer), right click and choose “open”
3. Find File Folder labeled “Jpeg” and double click to open it. You should then see all the x-ray images as jpeg images. From here, you can single click any image, right click and “open with” any photo application you have on your computer (ie. Windows Picture and Fax Viewer, Photoshop, etc.)

If you are having a problem viewing images or installing the Catella4 Viewer, please contact our office at (715) 693-4560. Thank you!